

Aqua アクアライザー Riser **T50**

Electrolytic Hypochlorous Acid Water Generator



*From washing food
ingredients to cooking
utensil and indoor plant
hygiene management*

Since 2002

Can be used widely, from washing food ingredients to cooking utensil and indoor plant hygiene management, by adjusting the concentration to suit the application.

**Electrolytic hypochlorous acid water: An aqueous solution primarily composed of hypochlorite ions that are generated through saline water electrolysis and without the use of any chemicals. Japan's Ministry of Health, Labour and Welfare recognizes electrolytic hypochlorous acid water as having the same properties as dilute sodium hypochlorite, thereby enabling its use as a food additive in the same manner.*

Aqua Riser Features

Point 1

Use in any situation!

Sterilize and wash food ingredients. Use for hand washing and for sterilizing cooking utensils, cooking lines, and indoor plant floors and walls to simultaneously deodorize and prevent secondary contamination in plants. Simply pour over toilets and food scrap bins after cleaning to sterilize and deodorize these.

Point 2

Safe for humans and the environment!

Made from water and salt, hypochlorous acid water rarely causes rough hands, leaves behind little residue, does not have a unique chemical odor, and is also safe for the environment.

Point 3

Easy to operate!

Use the touch screen to easily change the current usage concentration and quickly check the usage volume.

Point 4

Models can be selected and installed to meet the demands of the site!

- Select models based on the concentration and usage volume of the site.
- Use any type of water: room temperature water, cold water (cooler water), well water (drinking water compliant), seawater

Available options

- Different lines have different concentrations: Install on lines with various concentrations.
- Select the pH adjustment method: Organic acid, carbon gas
- Manage using a chlorine concentration meter and a pH meter.

Slightly acidic hypochlorous acid water sterilization tests

| Test bacteria | Before treatment | After a 1-minute electrolyzed water treatment |
|--|-------------------|---|
| <i>Staphylococcus aureus</i> MRSA 2871 | 7.1×10^5 | 0 |
| <i>Escherichia coli</i> O157:H7 | 1.8×10^6 | 0 |
| <i>Vibrio fluvialis</i> ATCC33809 | 4.2×10^6 | 0 |
| <i>Salmonella typhimurium</i> 121 | 2.5×10^5 | 0 |
| <i>Pseudomonas aeruginosa</i> A3 | 1.4×10^5 | 0 |
| <i>Klebsiella pneumoniae</i> 402 | 2.6×10^5 | 0 |

*Slightly acidic hypochlorous acid water quality, effective chlorine concentration: 20 ppm, pH 6.5

Biotechnology Research Center, Faculty of Engineering, Toyama Prefectural University, Professor Tamotsu Furumai

Aqua
Riser
T50



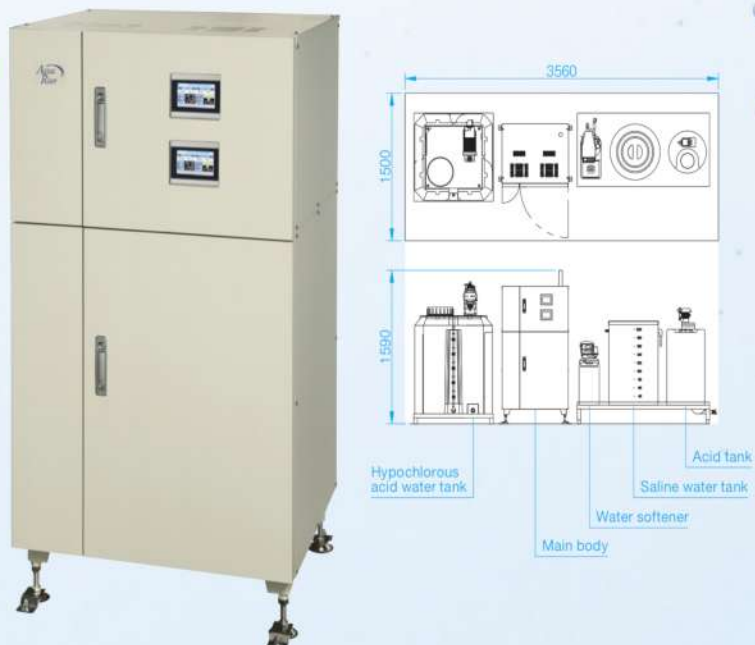
| | | |
|--|--|--|
| Product name | Electrolytic Hypochlorous Acid Water Generator | |
| Main unit size (mm) | W650 x D650 x H1,460 | |
| Main unit weight | Approx. 90kg (when tank is empty), Approx. 190kg when filled | |
| Power supply | Single-phase 100V, 50/60Hz | |
| Rated power consumption | Maximum during electrolysis 630W | |
| Applicable breaker capacity | Single-phase 100V, 15A, 50/60Hz | |
| Applicable socket type | Two-pole with ground (Type B), 15A, 125V | |
| Power cord | Type B plug, 125V, 12A, 1,500mm effective cord length | |
| Raw water | Water quality | Drinking water quality standards compliant |
| | Water pressure | 0.15 – 0.3MPa |
| | Water hardness | Under 50mg/L |
| | Water temperature | 5 – 30°C |
| Generated water | Classification | Electrolytic hypochlorous acid water |
| | Maximum generation volume (during 24-hour operations) | 30ppm generation volume 57t/day |
| | | 50ppm generation volume 34t/day |
| | | 80ppm generation volume 21t/day |
| | | 100ppm generation volume 17t/day |
| | 200ppm generation volume 8t/day | |
| Water supply/discharge pipe diameter | Raw water side: HIVP25, Generated water side: HIVP25 | |
| Operating environment temperature (°C) | 5 – 35°C | |
| Installation environment | Requires continuous ventilation, indoor-use only | |

Aqua
Riser
T100

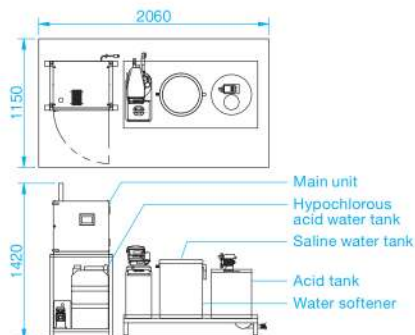


| | | |
|--|---|--|
| Product name | Electrolytic Hypochlorous Acid Water Generator | |
| Main unit size (mm) | W604 x D650 x H1,460 | |
| Main unit weight | Approx. 75kg | |
| Power supply | Single-phase 200V, 50/60Hz | |
| Rated power consumption | Maximum during electrolysis 1,200W | |
| Applicable breaker capacity | Single-phase 200V, 30A, 50/60Hz | |
| Raw water | Water quality | Drinking water quality standards compliant |
| | Water pressure | Depends on the pump selected for the site. |
| | Water hardness | Under 50mg/L |
| | Water temperature | 5 ~ 30°C |
| Generated water | Classification | Electrolytic hypochlorous acid water |
| | Maximum generation volume (during 24-hour operations) | 30ppm generation volume 129t/day |
| | | 50ppm generation volume 78t/day |
| | | 80ppm generation volume 48t/day |
| | | 100ppm generation volume 39t/day |
| 200ppm generation volume 20t/day | | |
| Water supply/discharge pipe diameter | Depends on the pipe diameter and flow rate at the site. | |
| Operating environment temperature (°C) | 5 ~ 35°C | |
| Installation environment | Requires continuous ventilation, indoor-use only | |

Aqua
Riser
T200

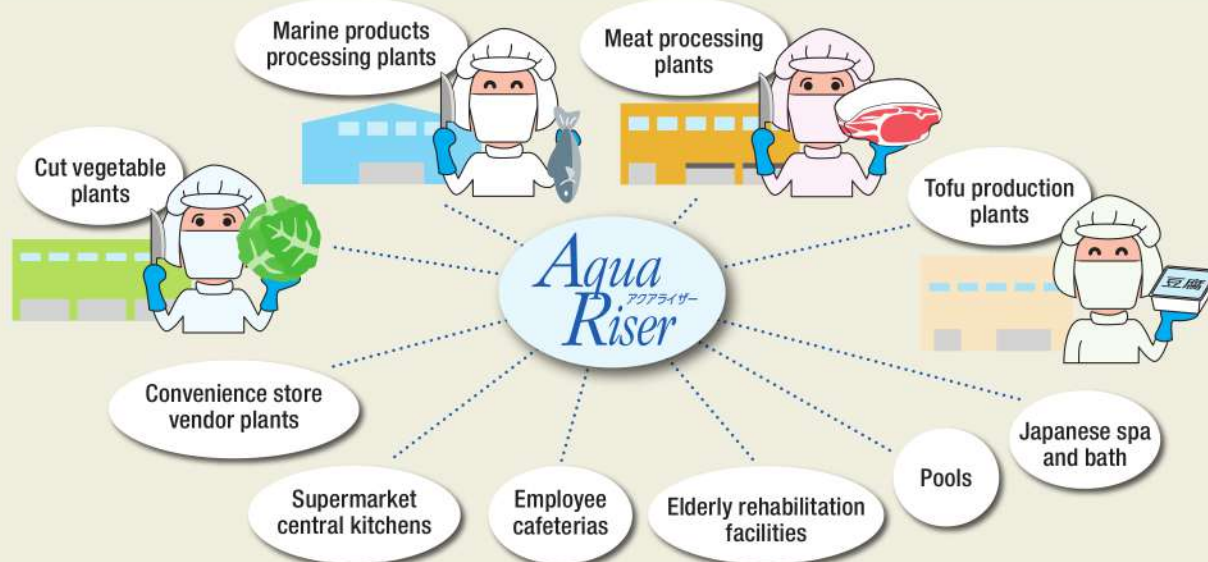


| | | |
|--|---|--|
| Product name | Electrolytic Hypochlorous Acid Water Generator | |
| Main unit size (mm) | W760 x D650 x H1,590 | |
| Main unit weight | Approx. 115kg | |
| Power supply | Single-phase 200V, 50/60Hz | |
| Rated power consumption | Maximum during electrolysis 2,400W | |
| Applicable breaker capacity | Single-phase 200V, 30A, 50/60Hz | |
| Raw water | Water quality | Drinking water quality standards compliant |
| | Water pressure | Depends on the pump selected for the site. |
| | Water hardness | Under 50mg/L |
| | Water temperature | 5 – 30°C |
| Generated water | Classification | Electrolytic hypochlorous acid water |
| | Maximum generation volume (during 24-hour operations) | 30ppm generation volume 258t/day |
| | | 50ppm generation volume 155t/day |
| | | 80ppm generation volume 97t/day |
| | | 100ppm generation volume 77t/day |
| | 200ppm generation volume 38t/day | |
| Water supply/discharge pipe diameter | Depends on the pipe diameter and flow rate at the site. | |
| Operating environment temperature (°C) | 5 – 35°C | |
| Installation environment | Requires continuous ventilation, indoor-use only | |



| | | |
|--|---|--|
| Product name | Electrolytic Hypochlorous Acid Water Generator | |
| Main unit size (mm) | W650 x D440 x H1,420 | |
| Main unit weight | Approx. 30kg, Approx. 65kg when filled | |
| Power supply | Single-phase 100V, 50/60Hz | |
| Rated power consumption | Maximum during electrolysis 400W | |
| Applicable breaker capacity | Single-phase 100V, 15A, 50/60Hz | |
| Applicable socket type | Two-pole with ground (Type B), 15A, 125V | |
| Power cord | Type B plug, 125V, 12A, 2,000mm effective cord length | |
| Raw water | Water quality | Drinking water quality standards compliant |
| | Water pressure | 0.15 – 0.3MPa |
| | Water hardness | Under 50mg/L |
| | Water temperature | 5 – 30°C |
| Generated water | Classification | Electrolytic hypochlorous acid water |
| | Maximum generation volume (during 24-hour operations) | 30ppm generation volume 33t/day |
| | | 50ppm generation volume 20t/day |
| | | 80ppm generation volume 12t/day |
| | | 100ppm generation volume 10t/day |
| | | 200ppm generation volume 5t/day |
| Water supply/discharge pipe diameter | Raw water side: HIVP20, Generated water side: HIVP20 | |
| Operating environment temperature (°C) | 5 – 35°C | |
| Installation environment | Requires ventilation, indoor-use only | |

Installation Examples



● Retail outlets

*Specifications and appearances may be changed for purposes of improvement without prior notification.

Supplier **Kawamura Shokai**